

# Canterbury FOUNDATION

Where community is at home, and life is well-lived.



*Canterbury Foundation* is a private not-for-profit charitable organization that has provided quality seniors' accommodation and related supportive services to Edmontonians for more than 40 years.

## OUR MISSION

Canterbury provides safety, comfort, independence and connection to support meaningful lives.

We visibly respect the dignity of every person;

We provide compassionate care and quality services centered on the needs and abilities of the people we serve;

We demonstrate open and ethical behaviour in all our relationships and honesty, integrity and accountability in all our actions.

## Welcome to Canterbury

Located in the desirable, quiet community of Laurier Heights in west Edmonton, the *Canterbury Foundation* operates four seniors' living options on one site.

### CANTERBURY MANOR

127- suite independent living seniors' apartment complex

### CANTERBURY HEIGHTS

50- studio, one and two bedroom supportive living complex

### CANTERBURY COURT

145- studio and double suite supportive living facility

### CANTERBURY LANE

52- studio suite secure and supportive setting for seniors with cognitive impairment

## RENTAL INFORMATION

### Eligibility for Residence

Anyone over 65 years of age, functionally independent and in acceptable health is eligible to take up residency in Canterbury Court.

### Application Procedure

Each applicant is required to:

- Complete an application form for residence.
- Submit appropriate physician completed medical forms.
- Be assessed by Canterbury Foundation Registered Nurse.
- Provide additional information as management may consider necessary.
- Sign a standard residency agreement.

*Management reserves the right to accept or reject any application.*

### Administration Fee

Prior to move-in and on acceptance of the residency agreement, Canterbury Foundation requires payment of a non-refundable, onetime only Administration Fee. This is NOT a security deposit.

# Canterbury Court / Canterbury Heights

SUPPORTIVE LIVING

Canterbury Court and Heights offers newly constructed and renovated studio, one and two-bedroom suites in comfortable, supportive living spaces



## BENEFITS

- Breakfast, lunch, dinner plus 3 snacks
- Housekeeping
  - Daily bed making, bathroom tidy & trash removal
  - Weekly cleaning (bathroom, vacuuming & dusting)
  - Clean bed linens provided weekly & fresh towels offered twice per week
- 24/7 on-site Registered Nurse (RN)
- Licensed Practical Nurse (LPN)
- Health Care Aid (HCA)
- Care as assessed by AHS Home Care
  - assistance with medications, dressing, personal hygiene, toileting/incontinence management, wound care, etc.

- Utilities (not including cable & phone)
- Air conditioning & individual suite heating
- Bus trips for shopping trips & excursions
- On-site activities coordinators
  - Enjoy feature movie nights, live music & entertainment, guest speakers
  - Play games of card bingo, shuffleboard, bridge, cribbage, trivia, whist, etc.
  - Group exercise activities such as arthritic yoga ... & much more
- Weekday receptionist
- 24/7 maintenance staff available
- Wanderguard signaling device available

## AMENITIES

- Health clinic that includes: physician, foot care, hearing aids, denturist, blood pressure, optometrist etc.
- Pharmacist on-site
- Hair Salon
- Guest suite
- Tuck shop
- Landscaped gardens
- Activities room
- Library
- Chapel
- Private dining rooms

## SUITE FEATURES

- Large walk-in shower with slip-resistant floor
- Barrier-free Bathroom
- Solid surface Corian countertops
- Safety features throughout
- Storage options throughout
- And many other high-end suite features and amenities

### COURT SUITE TYPE

COURT SUITE TYPE	AREA	RATE
Studio	266 - 448 sq.ft	\$4,020 - \$5,022
One Bedroom - Single Occupancy	461 - 650 sq.ft	\$5,022 - \$6,124
One Bedroom - Double Occupancy	461 - 650 sq.ft	\$7,053 - \$8,077

### HEIGHTS SUITE TYPE

HEIGHTS SUITE TYPE	AREA	RATE
Studio	355 sq.ft	\$5,180
One Bedroom - Single Occupancy	719 sq.ft	\$8,120
One Bedroom - Double Occupancy	719 sq.ft	\$9,759
Two Bedroom - Single Occupancy	719 sq.ft	\$8,306
Two Bedroom - Double Occupancy	720 sq.ft	\$10,529



INDEPENDENT LIVING, SUPPORTIVE LIVING, MEMORY CARE, ENHANCED SUPPORTIVE LIVING

Further information & tours are available, please call or email to book **780.483.5361**  
[home@canterburyfoundation.com](mailto:home@canterburyfoundation.com) | [canterburyfoundation.com](http://canterburyfoundation.com)

The following services are provided for the convenience and enjoyment of residents:



**IGA GROCERY  
DELIVERY PROGRAM**

Residents of Canterbury Foundation can enroll in a convenient service to receive weekly groceries from the neighborhood grocer – Andy’s IGA. *Each week, groceries will be delivered and distributed to your suite! Applicable fees may be required.*



**BUS RIDES**

Residents participate in scheduled excursions through our campus facilitated bus rides. Visits to shopping centers, theaters, restaurants and many more sites around the city are planned and advertised on the monthly calendar for enrichment activities. *Applicable fees may be required.*



**CHERUB’S COURT CAFÉ**

Toiletries, milk, eggs, specialty coffees, snacks, gifts & cards



**BEAUTY SALON**

Providing ladies & gentlemen haircuts, hair set, perm, color, nails, etc.



**EDMONTON PUBLIC LIBRARY**

Personalized library service:



**ACTIVITY ROOM RENTALS**

book the room for a private function.



**AUTOMATIC TELLER MACHINE**

located in the Court Games Lounge



**DINING SERVICES**

Canterbury Foundation provides dining services by our Red Seal Chef which include breakfast, lunch and dinner, seven days per week.

A long history of pride in providing first-class meals and a continued desire to strive for excellence characterizes Canterbury’s dietary service. Menus are reviewed and approved by a Registered Dietitian.

- Meal tray service is available upon request for a fee
- Private dining rooms can be booked for special occasions for family and friends



Quality of life is enhanced at Canterbury by offering a wide variety of activities on a daily basis. Activities are varied to allow residents a diverse selection, whether the need is intellectual, physical, spiritual or just to have fun. Small or large groups, games or exercises, shopping or garden visits. If residents enjoy an activity that is not planned and would like to see it added, staff will attempt to meet their needs.

### PHYSICAL PROGRAMS

**Being active should be fun and we have many options for you!**

Games such as Ring Toss, Bocce, Bowling, Carpet Darts, Bolongo Ball, Washer Toss and Horse Races to name a few.

**Group exercises** that focus on cardiovascular health and strengthening of bones and muscles are also offered.

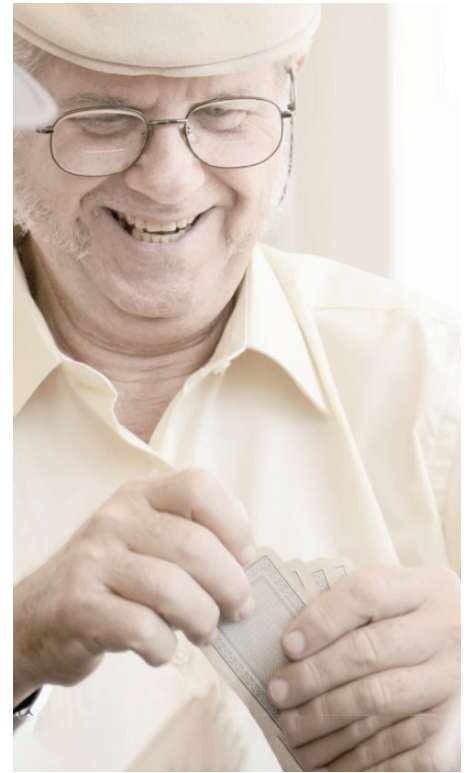
### INTELLECTUAL STIMULATION

As the famous saying goes: *"use it or lose it"*. At Canterbury, we encourage our residents to keep learning new things and to have fun doing so. We offer brain-teaser activities such as Trivia! Crosswords, Penny-ante, Big Brain, Wheel of Fortune, Bingo, Scrabble, and much more.

### SOCIAL PROGRAMS

Laughter is truly the best medicine and we encourage you to engage with fellow residents through our social activities, where you can build connections and friendships within a supportive community.

If you don't quite know where to begin, you can start with any of the programs in our **monthly calendar**. Or try joining your neighbors for the daily tea and coffee times in the lounge. We also have **weekly entertainment with live music** on Fridays, and regular themed events to **celebrate special holidays** that incorporate **music, dancing, and plenty of fun!**



### CHAPEL SERVICES

supported by local area faith communities, including Anglican, United, Baptist, Lutheran, Roman Catholic and Jewish faiths.

### SHUTTLE SERVICES

available via the Canterbury Foundation coach to various locations including local malls, shopping centres and activities excursions.

### HAPPY HOUR

weekly event for socializing

### ENTERTAINMENT

entertainers and bands perform several times a week for the enjoyment of the residents.

### CULTURAL & RELIGIOUS HOLIDAYS

Valentine's Day, St. Patrick's Day, Rosh Hashanah, Oktoberfest, Halloween, Remembrance Day, Christmas and Ukrainian Christmas

We are situated in a great neighborhood where outdoor walks are encouraged.

There are many resting benches around the perimeter of our campus, so grab a friend, and enjoy some fresh air.

*We look forward to seeing you out and about in the neighborhood!*





### SECURITY

In addition to the presence of our day-time reception team, the security systems in Canterbury Manor include video surveillance, strict access control, heated underground parking, emergency response, and efficient fire alarm system.



### MAINTENANCE

The appearance and condition of our buildings and grounds are a high priority for *Canterbury Foundation*. The maintenance of the property and grounds is achieved through a regular and preventative maintenance program. The carpentry, electrical, plumbing and structural requirements of the property are maintained to the highest standards.



*Canterbury Foundation* is dedicated to providing its residents with the services necessary to ensure their suite offers all the comforts of home. Services are provided by trained personnel who focus on ensuring the safety, security and comfort of all residents.



### HOUSEKEEPING

To assist residents with maintaining their independence, housekeeping is an available service as part of our *Lifestyle Packages*.



### LAUNDRY

Washers and dryers for personal use are available to residents free of charge. Laundry services can be made available for an additional fee.





### HEALTH CARE SERVICES

*Canterbury Foundation* health care services include private care and delegated care as assessed by an Alberta Health Services Home Care Case Manager.

Our health care staff includes

**24-hour Registered Nurse (RN) coverage**

**Qualified Health Care Aids (HCAs)**

*Canterbury Foundation* provides additional health care services including:

In-house physician clinic

---

On-site pharmacist

---

Blood pressure clinics

---

Foot care clinics

---

Hearing aid clinics

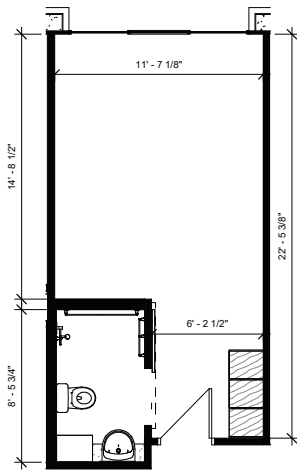
---

Mobile dentist and denturist

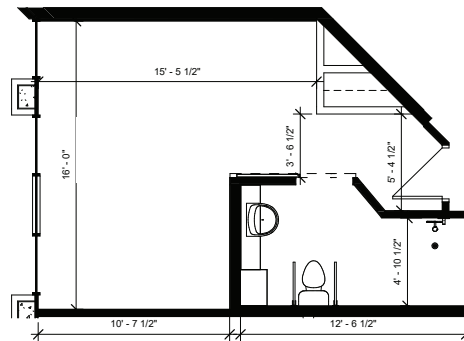
---

**CANTERBURY COURT FLOORPLANS**

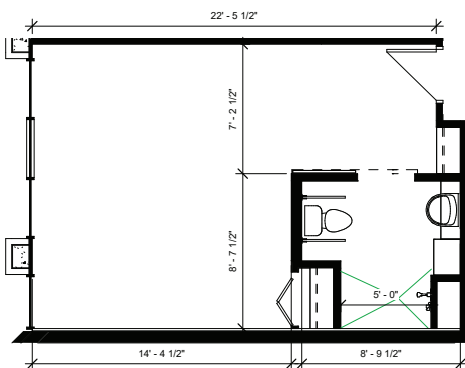
Spacious studio to two-bedrooms floorplans.



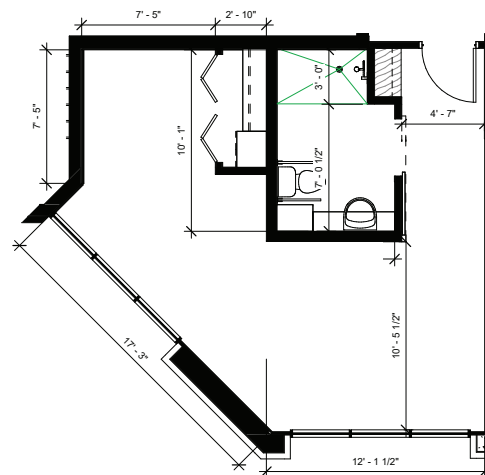
**A** | Studio 266 sq ft



**B** | Studio 336 sq ft



**C** | Studio 363 sq ft

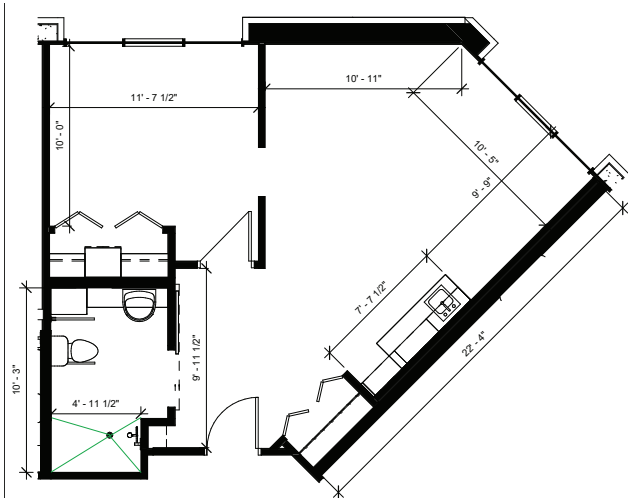


**D** | Studio 422 sq ft

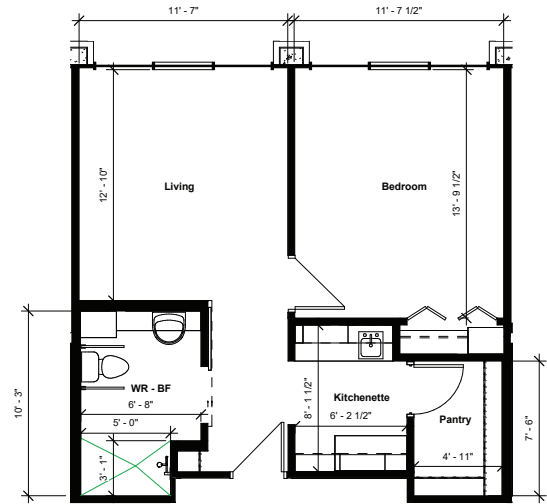
\* plans are based on typical layout not all plans exactly as illustrated

**CANTERBURY COURT FLOORPLANS**

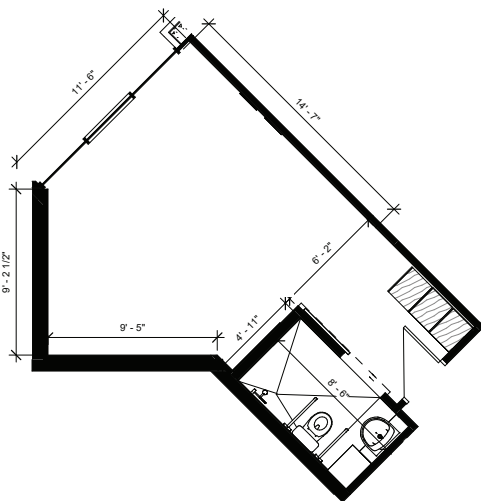
Spacious studio to two-bedrooms floorplans.



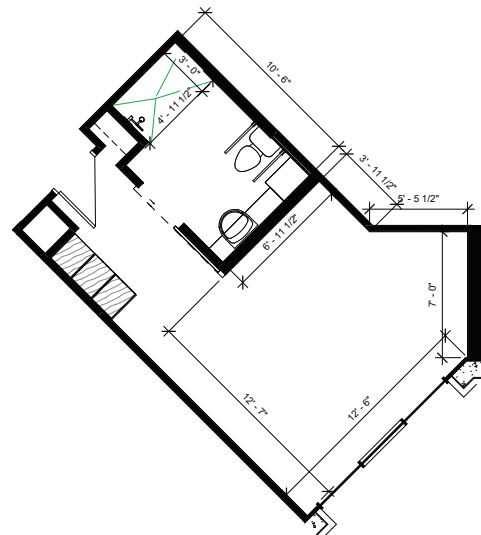
**E** | One Bedroom 461 sq ft



**F** | One Bedroom 518 sq ft



**G** | Studio 304 sq ft



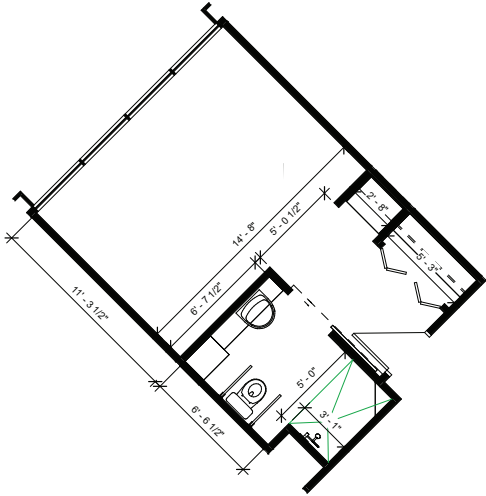
**H** | Studio 320 sq ft

\* plans are based on typical layout not all plans exactly as illustrated

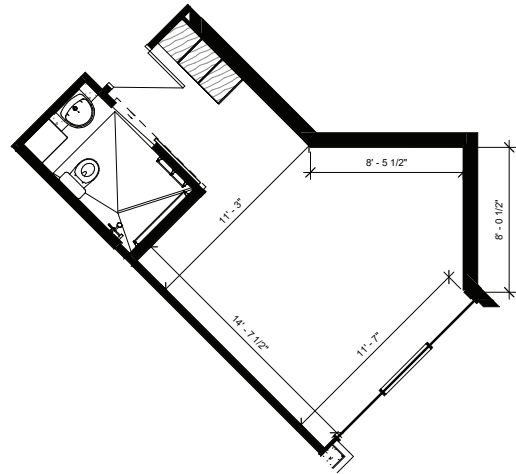


**CANTERBURY COURT FLOORPLANS**

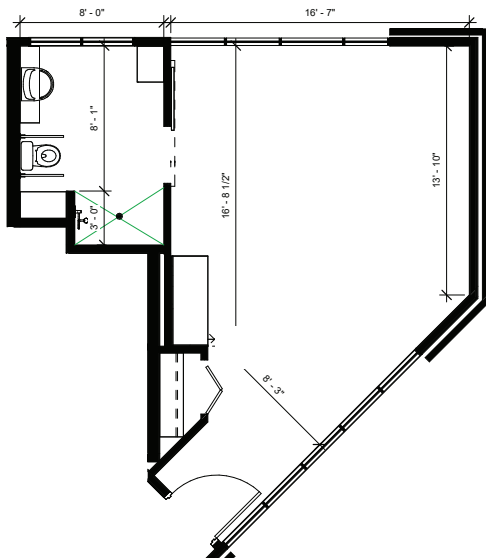
Spacious studio to two-bedrooms floorplans.



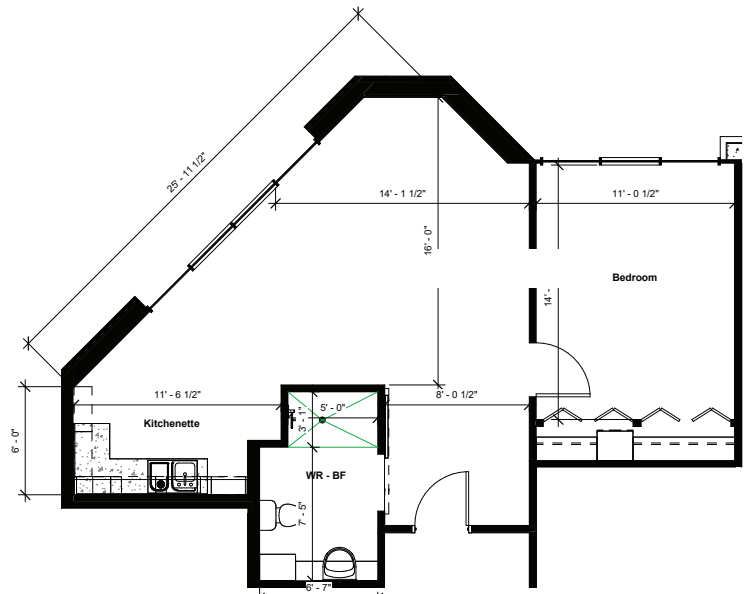
I | Studio 291 sq ft



J | Studio 299 sq ft



K | Studio 448 sq ft

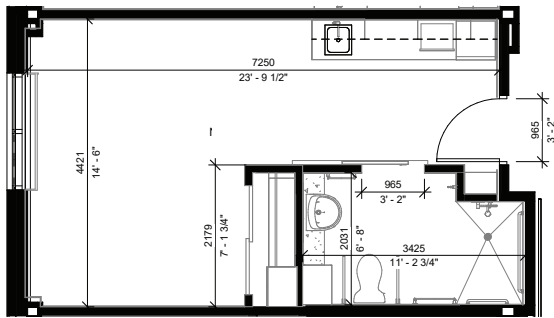


L | One Bedroom 638 sq ft

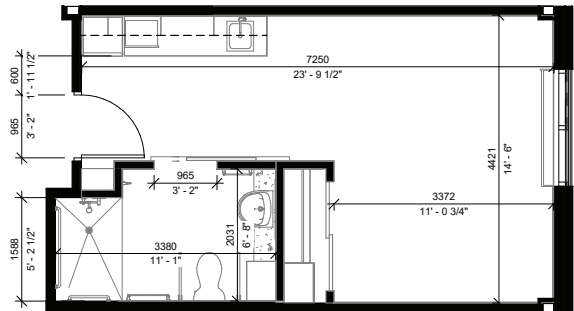
\* plans are based on typical layout not all plans exactly as illustrated

**CANTERBURY HEIGHTS FLOORPLANS**

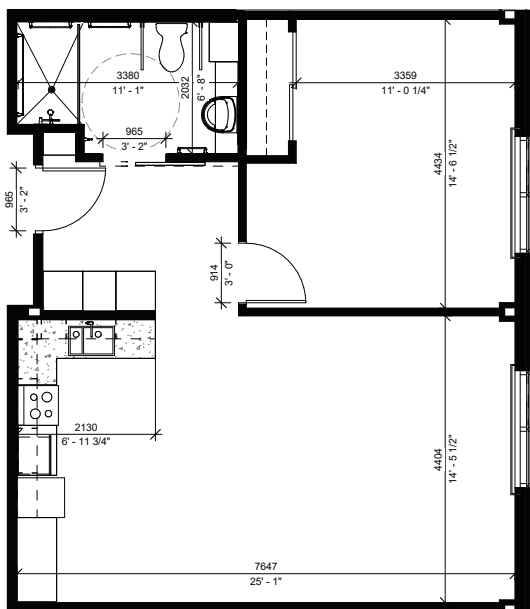
Spacious studio to two-bedrooms floorplans.



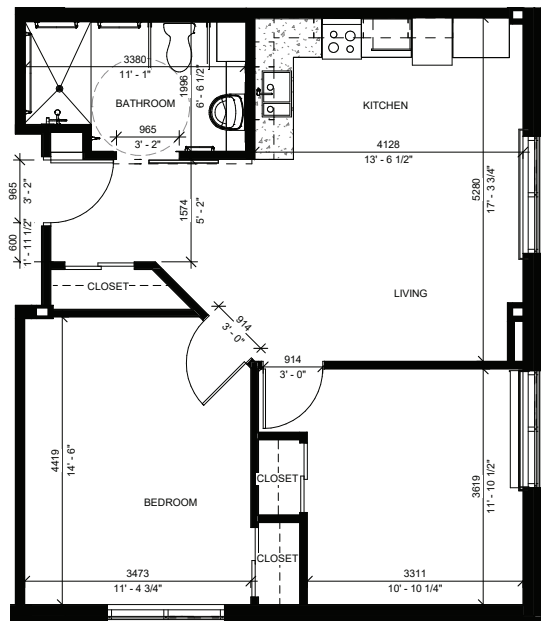
**A | Studio Suite (North) 355 sq ft**



**B | Studio Suite (South) 355 sq ft**



**C | 1 Bedroom 719 sq ft**



**D | 2 Bedroom 719 sq ft**

\* plans are based on typical layout not all plans exactly as illustrated